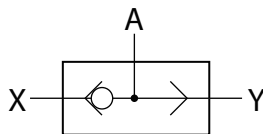


# KS系列梭阀

## Series Shuttle Valve



### 图形符号 symbols

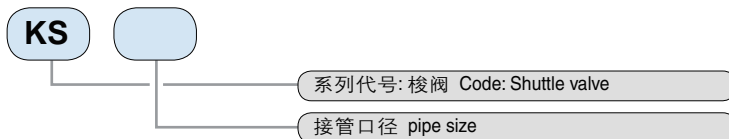


### 产品特点 Features

本系列产品相当于两个单向阀组合而成，有两个输入口和一个输出口，在气动系统中，它即可用于执行回路中，又可用于控制回路中，起逻辑“或”的作用。

The function is same as two one way flow valve, with two in port and one air port, it can be used both in acting and control system.

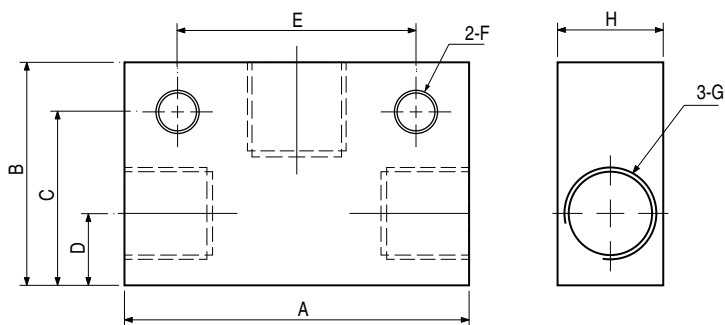
### 型号注释 Order Code



### 技术参数 Specification

规格 Type	接管口径 pipe size	通径 dia	工作介质 working medium	使用压力范围 working pressure range	开启压力 start pressure	使用温度 working tempt.
KS-06	G1/8	3	空气 / air	0.05~1.2MPa	0.05MPa	-5~60°C
KS-08	G1/4	6				
KS-10	G3/8	8				
KS-15	G1/2	10				
KS-20	G3/4	15				
KS-25	G1	20				

### 外形尺寸 Outlook & Dimension



规格type	A	B	C	D	E	F	G	H
KS-06	40	26	21	8	25	Ø4.3	G1/8	16
KS-08	52	35	25	11	35	Ø5.5	G1/4	22
KS-10	70	50	41	18	48	Ø7	G3/8	30
KS-15	75	50	41	18	48	Ø7	G1/2	30
KS-20	110	70	58	22	72	Ø7	G3/4	40
KS-25	110	70	58	22	72	Ø7	G1	40